

ENROLLED IN ONE OF OUR DISTANCE EDUCATION COURSES?

Get Started!

Visit the NextSteps Web site:
www.yorku.ca/laps/disted/nextsteps

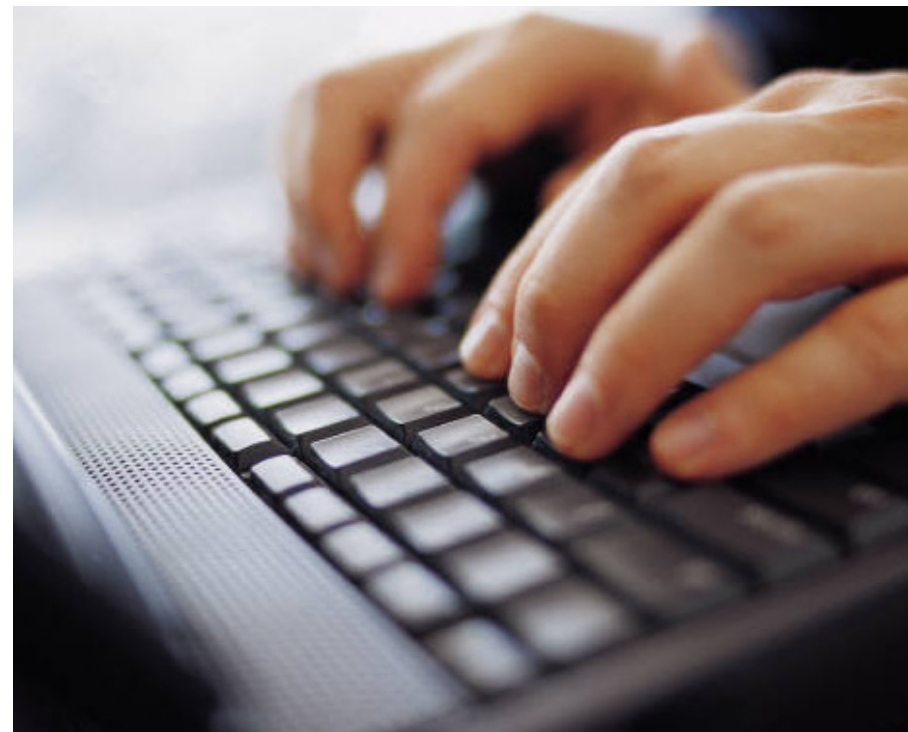
LOOKING FOR A DISTANCE EDUCATION COURSE AT YORK UNIVERSITY?

Visit the current students Course Timetables and search by Distance Courses:
<https://w2prod.sis.yorku.ca/Apps/WebObjects/cdm>

NEED MORE HELP?

Check our Web site for up-to-date information about current and up-coming sessions.

www.yorku.ca/laps/disted



PROFESSOR DIANE ZORN

Philosophy

"Leaders in distance education need to be ground-breakers and move away from traditional approaches to online teaching and learning. We design effective online learning environments that enable greater choices and give students the ability to customize their learning environments. We constantly refine the process with feedback from all involved in the teaching and learning process."



Winter 2010

Faculty of Liberal Arts & Professional Studies



eServices Office

Distance Education

eServices Office

2120 Technology Enhanced Learning Building (TEL)
Faculty of Liberal Arts & Professional Studies
York University, 4700 Keele Street,
Toronto, Ontario, Canada, M3J 1P3

Hours of Operation

Mon-Thurs 8:30am-7pm
Fri 8:30am-4:30pm
Fri 8:30am-3:30pm (June to August)

Phone number: 416-736-5831
Fax number: 416-736-5637
Toll Free number (North America): 1 (866) 261-1790

Questions?: disted@yorku.ca
Off-site exams: deexams@yorku.ca
Computing help: esohelp@yorku.ca

www.yorku.ca/laps/disted

Distance Education

The eServices Office offers students the opportunity to take courses via Internet, Correspondence and Mixed-Mode. To enrol in these credit course offerings you will need to be admitted as a student at York University.

HOW DO I APPLY FOR DISTANCE EDUCATION COURSES?

To apply to a degree or certificate program, or as a visiting student, refer to the York University Admissions Web site at www.yorku.ca/admissions for detailed admissions information and online application procedures. Once admitted, you may enrol for courses by using the online Registration and Enrolment Module available at www.registrar.yorku.ca. The York University course timetable and enrolment guide are also available on this Web site.

INTERNET (INTR) AND CORRESPONDENCE (CORS) COURSES

You can alleviate your on-campus schedule by mixing your in-class courses with Internet and Correspondence courses. You can learn from the convenience of your home or office anywhere in the world. Distance courses use the same textbooks and materials and cover the same course content as in-class sections. These courses count towards your degree or certificate program in exactly the same way as in-class courses.

MIXED-MODE COURSES (LECI): IN CLASS & INTERNET
Mixed-Mode course format – approximately half in-class and half Internet – reduces your on-campus visits by almost fifty percent. The course instructor will inform you of the mandatory on-campus class schedule and the online component at the beginning of the term.

PROGRAMS OFFERED VIA DISTANCE EDUCATION

You can now complete the following programs entirely at a distance through Internet and Correspondence courses:

Faculty of Liberal Arts & Professional Studies

- Bachelor of Administrative Studies
- Certificate in Management

Faculty of Graduate Studies

- Master of Science in Nursing (MScN)

Many distance courses are offered in various disciplines that you can take with or without pursuing a distance degree.

Visit www.yorku.ca/laps/disted for course listings.

If you have any questions, e-mail disted@yorku.ca or call 416 736 5831.

Winter 2010 Distance Education Course Offerings (W & WW Terms)

FACULTY OF LIBERAL ARTS & PROFESSIONAL STUDIES

TERM	COURSE ID					COURSE TITLE	TYPE	CATALOG #
W	AP	ADMS	1000	3.0	P	Introduction to Administrative Studies	INTR	E14G01
W	AP	ADMS	1010	3.0	T	Business in the Canadian Context	INTR	X13Q01
W	AP	ADMS	2200	3.0	P	Introductory Marketing	INTR	C18J01
W	AP	ADMS	2320	3.0	P	Quantitative Methods I	INTR	D05X01
W	AP	ADMS	2400	3.0	P	Introduction to Organizational Behaviour	INTR	A51E01
W	AP	ADMS	2500	3.0	O	Introduction to Financial Accounting	INTR	U68H01
W	AP	ADMS	2510	3.0	Q	Introduction to Management Accounting	INTR	Y32U01
W	AP	ADMS	2511	3.0	T	Management Information Systems	INTR	P31H01
W	AP	ADMS	2600	3.0	O	Human Resources Management (AP/HRM 2600 Cat#: D36N01)	INTR	J30A01
W	AP	ADMS	2610	3.0	O	Elements of Law Part One	INTR	J07X01
W	AP	ADMS	2610	3.0	S	Elements of Law Part One	INTR	W27H01
W	AP	ADMS	3120	3.0	M	Gender Issues in Management	INTR	G24M01
W	AP	ADMS	3330	3.0	P	Quantitative Methods II	INTR	N64C01
W	AP	ADMS	3410	3.0	N	Training and Development (AP/HRM 3410 Cat#: H06X01)	INTR	N00S01
WW	AP	ADMS	3410	3.0	O	Training and Development (AP/HRM 3410 Cat#: A53R01)	INTR	G47E01
W	AP	ADMS	3420	3.0	O	Employment Law (AP/HRM 3420 Cat#: C14Z01)	INTR	X67F01
W	AP	ADMS	3510	3.0	O	Managerial Cost Accounting and Analysis	INTR	E57H01
W	AP	ADMS	3520	3.0	M	Overview of Canadian Income Taxation	INTR	B45T01
W	AP	ADMS	3530	3.0	O	Finance	INTR	C03D01
W	AP	ADMS	3541	3.0	O	Personal Financial Planning	INTR	C61K01
W	AP	ADMS	3585	3.0	O	Intermediate Financial Accounting I	INTR	C90C01
W	AP	ADMS	3595	3.0	M	Intermediate Financial Accounting II	INTR	G31F01
W	AP	ADMS	3660	3.0	Q	Business Ethics and Corporate Social Responsibility	INTR	X92S01
W	AP	ADMS	3660	3.0	T	Business Ethics and Corporate Social Responsibility	INTR	P74Q01
W	AP	ADMS	3702	3.0	M	Comprehensive Emergency Management: Integrating Critical Knowledge with Practice	INTR	T95R01

W	AP	ADMS	3920	3.0	M	New Venture and Small Business Management	INTR	R41N01
W	AP	ADMS	3920	3.0	N	New Venture and Small Business Management	INTR	K88W01
W	AP	ADMS	3930	3.0	M	Management	INTR	E35X01
W	AP	ADMS	3930	3.0	N	Management	INTR	X88V01
W	AP	CLTR	3542	3.0	M	Consumer and Popular Culture (AP/HUMA 3901 Cat#: G66E01)	INTR	N19S01
W	AP	ECON	1010	3.0	P	Introduction to Macroeconomics	LECI	H50G01
W	AP	ECON	1010	3.0	Q	Introduction to Macroeconomics	LECI	A97P01
W	AP	EN	1002	3.0	T	Intertextualities	INTR	W68H01
W	AP	EN	3730	3.0	M	Substantive Editing	INTR	V09Q01
W	AP	EN	4230	3.0	M	Canadian Short Story	INTR	X53E01
W	AP	HRM	2600	3.0	O	Human Resources Management (AP/ADMS 2600 Cat#: J30A01)	INTR	D36N01
W	AP	HRM	3410	3.0	N	Training and Development (AP/ADMS 3410 Cat#: N00S01)	INTR	H06X01
WW	AP	HRM	3410	3.0	O	Training and Development (AP/ADMS 3410 Cat#: G47E01)	INTR	A53R01
W	AP	HRM	3420	3.0	O	Employment Law (AP/ADMS 3420 Cat#: X67F01)	INTR	C14Z01
W	AP	HUMA	3901	3.0	M	Consumer and Popular Culture (AP/CLTR 3542 Cat#: N19S01)	INTR	G66E01
W	AP	PHIL	1100	3.0	M	The Meaning of Life	LECI	TUTR 01 Cat#: S85W02 TUTR 02 Cat#: S85W03 TUTR 03 Cat#: S85W04 TUTR 04 Cat#: S85W05 TUTR 05 Cat#: S85W06 TUTR 06 Cat#: S85W07 TUTR 07 Cat#: S85W08 TUTR 08 Cat#: S85W09 TUTR 09 Cat#: S85W10 TUTR 10 Cat#: S85W11 TUTR 11 Cat#: S85W12 TUTR 12 Cat#: S85W13
W	AP	PHIL	2075	3.0	N	Introduction to Applied Ethics	LECI	TUTR 01 Cat#: M95Q02 TUTR 02 Cat#: M95Q03 TUTR 03 Cat#: M95Q04 TUTR 04 Cat#: M95Q05 TUTR 05 Cat#: M95Q06 TUTR 06 Cat#: M95Q07
W	AP	SOWK	2025	3.0	M	Eating Disorders: The Political, Social and Psychological Issues	INTR	W77M01
W	AP	SOWK	2035	3.0	M	Current Issues in Mental Health	INTR	N12K01
W	AP	SOWK	4100	3.0	N	Mental Health and Social Work	INTR	V42B01

FACULTY OF HEALTH

TERM	COURSE ID					COURSE TITLE	TYPE	CATALOG #
W	HH	NURS	3710	3.0	M	Nurses' Experience in Healthcare Environments	INTR	M98B01
W	HH	PSYC	2220	3.0	N	Sensation and Perception I	INTR	Z75R01

FACULTY OF GRADUATE STUDIES - MScN PROGRAM

TERM	COURSE ID					COURSE TITLE	TYPE	CATALOG #
W	HH	NURS	5300	3.0	M	Quantitative Research Methods in Nursing	INTR	H52U01
W	HH	NURS	5300	3.0	N	Quantitative Research Methods in Nursing	INTR	A99G01
W	HH	NURS	5300	3.0	O	Quantitative Research Methods in Nursing	INTR	R46Z01
W	HH	NURS	5400	3.0	M	Advanced Nursing Practicum	INTR	K93A01
W	HH	NURS	5400	3.0	N	Advanced Nursing Practicum	INTR	E40J01
W	HH	NURS	5560	3.0	M	Understanding and Experiencing Suffering: Praxis as Attunement and Engagement	INTR	U87R01
W	HH	NURS	5840	3.0	M	Advanced Health Assessment and Diagnosis II/Prerequisite: Nursing 5830	INTR	B57N01
W	HH	NURS	5860	3.0	A	Therapeutics in Primary Health Care II/Prerequisite: Nursing 5850 3.0/Corequisite: Nursing 5840 3.0	INTR	F97C01
W	HH	NURS	6300	0.0	M	Expressions of Nursing Scholarship	INTR	H81M01